



INTERACTION

Social Work on the Frontier of Change

Anne & Henry Zarrow School of Social Work

The University of Oklahoma School of Social Work received a \$5 million gift from the Anne and Henry Zarrow Foundation of Tulsa. Henry Zarrow, a life-long Tulsan, recently celebrated his 93rd birthday and his family wanted to surprise him with something special, they said. His children, Judy Kishner and Stuart Zarrow, and grandchildren, Julie Cohen, Jay Wohlgemuth and Edward Zarrow, all of whom are trustees of the Anne and Henry Zarrow Foundation, agreed that a major gift to the

School of Social Work would be a fitting way to honor Zarrow and his late wife, Anne. The gift will help construct a new building for the School of Social Work. The school has been in Rhyne

approved the naming of the school as the Anne and Henry Zarrow School of Social Work and the new social work building on the Norman campus as Anne and Henry Zarrow Hall.



Plans call for the new social work facility to be built in the center of the Norman campus on the site of the Jim Thorpe Multicultural Center at 700 Elm

Hall, a former fraternity house on the eastern edge of the Norman campus. The OU Regents meeting in Tulsa on March 25 unanimously

Ave. OU Regents have approved a major renovation of the Commons Building for the Jim Thorpe Center.

—The Journal Record

Social Work and The Summer Institute

The University of Oklahoma School of Community Medicine hosted an innovative, experiential examination of health care delivery in Tulsa during the 2nd Annual Summer Institute,

July 26-31, 2009. Participants in the institute – one of only two of its kind in the country – included first and second-year University of Oklahoma medical students, physician assis-

stant students, students from the OU Colleges of Social Work, Pharmacy and Nursing, faculty members, Dean Ray and President Clancy. The group took an in-depth

(Continued on page 2)

Inside this issue:

Staff Spotlight	2
Advocacy Among Us	2
In Their Own Words	3
Are UMADD?	3
Child Welfare Professional Enhancement Program	3
Faculty Accomplishments	4
Undergraduate Program Update	6
Practicum Program Update	6
Graduate Program Update	7
Board of visitors' Update	7
Alumni News	8

You can now find us on facebook!

"OU School of Social Work"

We're on the Web!

www.ou.edu/socialwork

Staff Spotlight

Donna Vaughn was born in Hobart Oklahoma. Her father was in the Oil business causing the family to move frequently. Donna lived in many states other than Oklahoma such as Kansas, Texas, Mississippi, Illinois and Nebraska.

In 1959, Donna moved with her mother and sister to Norman. It is here that Donna and her sister attended High School in one location, while her father continued to work and live out of state. After High School and Hills Business School in Oklahoma City, Donna moved to Southern California to live with her grandmother. Donna decided to call California home for 23 years. During the 23 years in California, she worked for Baxter Medical Supplies, Equitable Life and ARCO Oil Company as a Secretary and a

Supervisor for a Clerical staff.

At the end of the 23 years Donna decided to return to Norman to be close to her family. She married an Oklahoman named Joe. Donna went to work for the Daily Oklahoman until the oil business went bust in 1985. During this time Joe took a job in Modesto, California. In 1987 Donna was hired by Dr. Julia Norlin at the School of Social Work which caused her and Joe to move back to Norman. She said "it was a cultural shock after working in the corporate world to be in the academia world and in such an old building, with old furniture, old equipment and old professors – just kidding about the old professors". She loved the School immediately. Donna loved it so much that she just celebrated 21 years of service. She says,

"it has been like working with family and everyone has been so wonderful to us, through thick and thin". Donna hopes to retire in the near future in order to spend this time with her husband and 4 dogs.



Social Work and The Summer Institute (Continued)

(Continued from page 1)

look at community medicine from a range of perspectives and developed solutions to problems they identified during the week's experience.

Nine Social Work students were selected to be part of the 2nd Annual Summer Institute; this was the first year to include Social Work students.



(Left to Right) Tamika Sutton-Lipse, Susan Reed, Zunaira Cheema, Jennifer Morris, Lance Cartledge, Margaret Zwicker Shelton, Karen Hasselman, Kristina Giustozzi and Michelle Hovis

Social Work faculty participants were Dr. Julie Miller-Cribbs, Gena Massey and Showa Omabegho. Dr. Miller-Cribbs and Dr. Robert Block co-presented one of the anchoring lectures, *Bringing up Baby: The Social Determinants of Health*.

More information about the Summer Institute can be found at

<http://tulsa.ou.edu/socm/si.htm>



Advocacy Among Us

Oklahoma resident and OU MSW Student Velvet Brown-Watts, of Tulsa, has been invited to serve on a National Sickle Cell Coalition Team by Dominique Friend, Chair- from York, Pennsylvania. The team will meet with White House representative Kareem Dale, Special Assistant to the President for Disability Policy on October 19th. The coalition will discuss a national awareness campaign for sickle cell disease. Velvet Brown-Watts serves as Chairperson and founder of Supporters of Families with Sickle Cell Disease, Inc in Oklahoma. The Tulsa based organization was established in 2007 by sickle cell families, caregivers, and community members and leaders either affected by sickle cell disease or a desire to support

the organization. Since sickle cell disease can be such a crippling disease both physically and financially, Mrs. Brown-Watts hopes to engage the federal administration in this campaign, noting that it is more prevalent than is realized. Currently, it is reported that one in every 400 African-Americans has the disease and one in twelve carry the trait for it. It also affects many people of Central American, Cuban, South American, and Mediterranean regional ancestry.

Most people have misconceptions about the disease. Many people think it has been cured – after all, it was the first disease linked to a specific genetic marker that Dr. Linus Pauling identified seventy years

ago. Mrs. Brown-Watts will meet with the National Sickle Cell Coalition Team on Friday, Oct 16th, in York, Pennsylvania, with chair Dominique Friend, who is an adult living with sickle cell disease and has recently published a memoir, *Sickle: a Journey of Pain, Purpose, and Perseverance*. The initial meeting will feature guest speaker Dr. Clair Francomano, an eminent geneticist, who is internationally recognized and highly published. The event will feature some of the most dedicated researchers, educators, and community organizers known within the sickle cell community. For more information please contact the numbers Supporters of Families with Sickle Cell Disease, Inc at (918) 619-6174.

In Their Own Words. . . .

Do you ever wonder how much of an impact just one person, possibly you, could make? In *Her Own Words*, Marianne Wetherill, DrPH Student, shares her story of inspiration.

As a DrPH student interested in social work applications for improving community health, I signed up for a class recommended to me by Dr. Miller-Cribbs, "Community Analysis and Organization." At the time, I did not realize how revolutionizing these last few months of learning would be for me.

My group assignment was to investigate the concept of *community corporations*. Through my research, I came to realize how devastating "big business" can be on local economies, often decreasing a community's net economic worth by reducing

the quantity and quality of available jobs as well as stealing profits away from businesses owned by local residents. By choosing to support local businesses, one can make the conscious choice to invest in one's own community through the internal promotion of income, wealth, and jobs. In fact, the longer a dollar circulates within a community, the greater this "multiplier" effect can bring benefit.

I quickly found myself discussing this concept with my fellow co-workers at Tulsa CARES. Our agency provides social services to people living with HIV/AIDS, including access to a food pantry. We already receive donations and make purchases from the local Cherry Street Farmer's Market, so why not do more?

After discussing the benefits and options

with my program director, we decided to begin stocking our food pantry with as many locally-produced foods as possible. Very soon, we will be able to serve our community in two ways: 1) providing those with hunger access to nutritious foods 2) supporting our local community by purchasing as many pantry foods as possible from local suppliers. We give many thanks to Natural Farms for working with us to make this project happen.

So, will Wal-Mart miss us? Probably not.

—Marianne Wetherill, MPH, RD/LD
DrPH Student, College of Public Health



Are UMADD?

Fellow OU-Tulsa School of Social Work students want to make UMADD. They are starting a UMADD community action site called OU MADD; a campus based student organization comprised of students, campus and community leaders, and law enforcement concerned about underage and high risk drinking behaviors. Their organizing project began as a class community organizing group effort

of Ashley Cunningham, Jamie Vogt and John Woodworth (MSW students). It is their hope and purpose to make OU MADD a longstanding OU affiliated organization in collaboration with Tulsa's Green Country MADD office. In order to become an OU affiliated organization, they need members!! Their purpose is to form community partnerships to help eliminate unsafe factors that contribute to

underage and high risk drinking behaviors. Anyone interested in free membership may contact Jamie Vogt at Jamie.a.vogt-1@ou.edu. For now, get the juicy scoop on A MADD AFFAIR...a food tasting/silent auction fundraising event of Green Country MADD. Contact Betty Groth at Green Country MADD 918-743-6233 for details.



Child Welfare Professional Enhancement Program

The mission of the Child Welfare Professional Enhancement Program (CWPEP) is to enhance and support Oklahoma's public Child Welfare workforce by recruiting MSW and BSW graduates into the field and providing educational opportunities and support to current Child Welfare staff. The CWPEP is a partnership between the OU School of Social Work, 5 BSW programs at universities across the state, the Oklahoma Department of Human Services (OKDHS) and the federal Department of Health & Human Services. A key component of the program is the significant financial sup-

port provided to participating students who make a contractual commitment to work in public Child Welfare in Oklahoma.

In Fall 2006, OKDHS Child Welfare staff embarked on an effort to clearly articulate the standards that would guide the State's public child welfare social work practice. Staff from across the State came together for complicated in-depth discussions to explore beliefs and values about the work. While there was no conscious effort to tie the standards to the Social Work Code of Ethics, the similarities are striking.

Most people get into social work in order to make a difference in the lives of others. Public Child Welfare is one of the hardest and most challenging areas of social work practice, but by doing it you will never have to wonder if you are making a difference.

If you are interested in a career in public Child Welfare, please contact CWPEP at (405) 325-2907 or see our website:

www.ou.edu/socialwork/projects. The deadline for applications is June 1.

FACULTY ACCOMPLISHMENTS



Monica Alzate



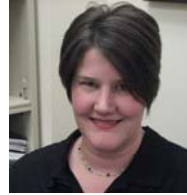
Lisa Byers



Tonia Caselman



Jeanette Davidson



Lori Franklin



Karen Gray



Gena Massey

PUBLICATIONS:

Alzate, M. M. (2009). Sexual and Reproductive Rights in Social Work Practice. *Affilia: The Journal of Women and Social Work*, 24, 2, 108 – 119. <http://aff.sagepub.com/>

Alzate, M. M., Moxley, D., Bohon, S., & Nackerud, L. (2009). The Influence of Perceived Health Status on Poor Women's Confidence in Leaving Welfare: Implications for Social Work. *Social Work in Health Care*, 48, 57 – 75. <http://journalseek.net/cgi-bin/journalseek/journalseek.cgi?field=issn&query=0098-1389>

Burgess, S., **Caselman, T.** & Carsey, J. (2009). *Empowering Children of Incarcerated Parents*. Chaplin, SC: Youthlight Press.

Cantwell, J. & **Caselman, T.** (2009). *Anger Control Remote Control*. Westport, Conn: Franklin Learning Systems. Therapeutic Game

Caselman, T. & Cantwell, J. (2009). *Bridge Over Worried Waters*. Westport, Conn: Franklin Learning Systems. Therapeutic Game

Davidson T. & **Davidson, J. R.** (2009). bell hooks, White Supremacy and the Academy. In M. Davidson & G. Yancy (Eds.), *Rocks, margins, looks: Critical perspectives on bell hooks*. Routledge Press.

Miller, C.R. & Archuleta, A.J. (2009). Macro social work practice: Educating through community-based action projects. Council on Social Work Education. San Antonio, TX.

Miller-Cribbs, J., Byers, L., & Moxley, D. (2009). Addressing the Issues and Challenges facing Older Native Americans: The Role of Gerontological Social Work in Indian Country. *Journal of Ethnic and Cultural Diversity in Social Work*.

Natale, A. P., & Moxley, D. P. (2009). Service engagement with high-risk men who have sex with men: Challenges and implications for social work. *Journal of Healthcare in Social Work*, 48 (1), 38-56.

Natale, A. P. (2009). HIV and AIDS: MSM needs, wants and desires for HIV prevention. *Journal of Gay and Lesbian Social Services*, 21 (1), 149-72.

Natale, A. P. (2009). Denver MSM socio-structural factors: Preliminary findings of perceived HIV transmission risk. *Journal of HIV/AIDS and Social Services*, 8 (1), 35-56.

Natale, A.P., Biswas, B., Urada, L., & Schyette, A. M. (2009). Global HIV and AIDS: Calling all social work educators. *Social Work Education*. In press.

Cross, S. L., Brown, E. F., Day, P. A., Limb, G. E., **Pellebon, D. A.**, Proctor, E. C., & Weaver, H. N. (2009). *The Status of Native Americans in Social Work Higher Education* (Native American Task Force Final Report). Washington D.C.: Council on Social Work Education.

Pellebon, D. A. (in press). The Art of Political Distraction: Using Same-Sex Marriage for Political gain. *Journal of Progressive Human Services*.

Pellebon, D. A. (2009). *Analysis of culture: Developing a scale to measure Asante's model of Afrocentricity*. Manuscript submitted for publication.

PRESENTATIONS:

Alzate, M. M. The Role of Sexual and Reproductive Rights in Social Work Practice. The 16th ICSD Symposium. July 27th - 31st, 2009. Monterrey, Nuevo León, Mexico.

Wallace, K., Rowan, J., Murphy, L., & **Alzate, M. M.** Reproductive Rights in Oklahoma. The Case of Teresa Hernandez. NASW-OK Annual Conference. March 29th - 31st, 2009. Norman, OK.

Byers, L., Miller-Cribbs, J., & Moxley, D. (2009, June) American Indian Elders: Struggles and Strengths. AARP Diversity and Aging in the 21st Century: The Power of Inclusion. Chicago, IL.

Byers, L., Miller-Cribbs, J., & Moxley, D. (2008, March). *Caring for Oklahoma's Native Elders: A Social Work Response*. 23rd Annual Oklahoma Minority Aging Conference, Oklahoma City, OK.

Davidow, J., Koehn, A. **Miller-Cribbs, J., Gaudet, J. & Massey, G.** (2008, October). Breaking Barriers to Health Care: Social Work Competencies for Engaging Immigrant Populations. APHA Annual Meeting and Exposition, San Diego, CA

Davidow, J., Koehn, A., **Miller-Cribbs, J., Massey, G., & Gaudet, J. M.** (2008, March). *The Road to Success Through Health and Education*. Oklahoma Public Health Conference, Tulsa, OK.

Davidow, J., Kientz, E., **Miller-Cribbs, J., Brooks, B., Ferrence, J., Saizow, R., Harrison, C., & Klenda, E.** (2008, March). *The Tulsa Alliance for Community Mental Health Longitudinal Clinic: An Inter-Disciplinary Approach to Student Learning and Patient Care*. First place award for poster. Oklahoma Public Health Conference, Tulsa, OK.

FACULTY ACCOMPLISHMENTS



Julie Miller-Cribbs



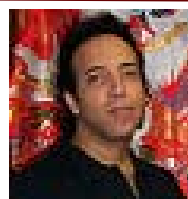
Christina Miller



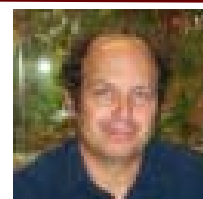
David Moxley



Anthony Natale



Dwain Pellebon



James Rosenthal



Susy Villegas

Kientz, E., Ferrence, J., Harrison, C., **Miller-Cribbs, J.**, Klenda, E., Davidow, J., & Brooks, B. (2008, February). *Preventing Disease and Complications: Education Through Team-Based Practice*. American College of Preventative Medicine Conference, Austin, TX.

Miller-Cribbs, J. E., Ferrence, J., Harrison, C., Kientz, E., Saizow, R., Brooks, B., Davidow, J., & Klenda, E. (2008, April). *Preventing Disease and Complications: Education Through Team-Based Practice*. Poster Presentation. Quest for Quality Conference, Oklahoma City, OK.

Miller-Cribbs, J., Davidow, J., Kientz, E., **Massey, G.**, & Koehn, A. (2008, October). Realism in Health Science Education and Practice: A Model Interdisciplinary Clinic. Council on Social Work Education 54th Annual Program Meeting, Philadelphia, PA

Miller-Cribbs, J., Moxley, D., Gaudet, J., **Massey, G.** & Davidow, J. (2009, March). *Social Work in Community Health: OUTFACH in Tulsa*. National Association of Social Workers, Oklahoma Chapter Conference, Norman, OK

Miller-Cribbs, J., Moxley, D., Natale, A., & Rosenthal, J. (2009, March). *The transition to the MSW and PHD in Social Work*. National Association of Social Workers, Oklahoma Chapter Conference, Norman, OK

Miller-Cribbs, J., Byers, L., Moxley, D., & Bowman, R. (2008, March). *Working with Native American Elders*. National Association of Social Workers, Oklahoma Chapter Conference, Norman, OK

Miller-Cribbs, J., & Mains, J. (2008, March). *Flying on Earth: Amelia Earhart as a Social Worker*. National Association of Social Workers, Oklahoma Chapter Conference, Norman, OK

Miller-Cribbs, J., Fox, M., Henley, C. & Duffy, F. (2009, November). Orienting Students to the Underserved: Evaluation of a Summer Institute within A School of Community Medicine. Association of American Medical Colleges, Research in Medical Education Annual Conference. Boston, MA. AAMC annual meeting.

Miller-Cribbs, J. & Mains, J. (2009, November). Accidental Social Worker: Amelia Earhart and the Settlement House Movement. CSWE's 55th Annual Program Meeting in San Antonio, TX

Miller-Cribbs, J., Moxley, D., & Byers, L. (2009, November). Native American Elders: AN Information Portal for Social Work Education & Practice. CSWE's 55th Annual Program Meeting in San Antonio, TX

Natale, A., Miller-Cribbs, J., Howry, J. (2008, October). Same-Sex Marriage and Social Work: Teaching Resources for Educators. Council on Social Work Education 54th Annual Program Meeting, Philadelphia, PA

Pellebon, D. A. (2009, November). *Examining HBSE instructors' knowledge of Afrocentricity*. Council on Social Work Education APM, San Antonio, TX.



GRANTS/CONTRACTS:

Caselman, T. & Miller-Cribbs, J. Redefine Evaluation Project Charles and Lynn Schusterman Foundation

Franklin, L. Faculty Enrichment Grant

Gray, K., Villegas, S. Faculty Enrichment Grant

Miller-Cribbs, J., Gray, K., & Byers, L. Oklahoma SEED Project
GWB Center for Social Development

Miller-Cribbs, J., Moxley, D., & Gray, K. Survey of Young, Uninsured Oklahomans Oklahoma Insurance Department

Miller-Cribbs, J., Hellman, C. & Fox, M. School of Community Medicine Summer and Faculty Institute Evaluation
George Kaiser Foundation

Henley, C., **Miller-Cribbs, J.**, Fox, M. School of Community Medicine Summer and Faculty Institute Evaluation
School of Community Medicine, OU
TULSA

Waxman, F., **Miller-Cribbs, J.**, Fox, M. & Hays-Grudo, J. Program in Community Health Research
National Institute of Health, INBRE Administrative Supplement Grant

Undergraduate Program Update

Welcome to the Undergraduate Program: As We Are – Fall 2009

Twenty-nine students graduated in May 2009 with the Bachelor of Arts in Social Work degree. We express congratulations to them along with a wish for a bright beginning to their career. For the School Year 2009-10, we have 71 active students in the undergraduate social work major, divided into 33 seniors and 38 juniors. This group is composed of 63 women and 8 men, of which 21% report minority racial status. “Non-traditional” students (25 years of age and over) account for 33% of our majors. We have 34 Pre-Social Work Majors preparing to apply to the program.

Several social work students have earned financial support through scholarships and grant awards for 2008-09. Jennifer Foster received the Leo S. and Virginia Kerley Cade Scholarship, the Oklahoma Memorial Union Scholarship, and the Ruby Brakebill Scholarship. She also received the Jean Lehl Koziara Scholarship and the Gertrude Hacker Kennedy Scholarship through her sorority, Alpha Gamma Delta. Rachel Dorsett received the Alvin Terrell Dixon Memorial Scholarship, and Megan Schafer participates in the University of Oklahoma Tuition Waiver Program. Cynthia Barker was selected for the Mary Lou Manzie Memorial Scholarship. Our Child Welfare Professional Enhancement Program supports 12 students with stipends and tuition assistance. Congratulations to all these students on their awards.

Our Vision: Nourishing the Undergraduate Program

I’ve been reading *Creating Campus Community: In Search of Ernest Boyer’s Legacy*, (thanks to the gentle mentorship of

Drs. Miller-Cribbs and Moxley). Parker J. Palmer states that Boyer envisioned a university engaged in “soul work” and reflecting:

- An educationally purposeful place where learning is the focus.
- An open place where civility is affirmed.
- A just place where people are honored and diversity pursued.
- A disciplined place where group obligations guide behavior.
- A caring place where individuals are supported/service is encouraged.
- A celebrative place where traditions are shared.

Our vision is to create a “community” where these values flourish, and we have launched efforts to realize this. For three years, we have held orientations for incoming juniors. This year, we combined our effort with the Graduate Program for an all School event. For the past two years, our Undergraduate Social Work Association has sponsored a grand reception for the graduating seniors. Professor Terri Fritz graced both events as keynote speaker, and awards were given to faculty. These evenings are capped by an exquisite reception. Last, our faculty teaching undergraduate courses have begun an examination of our academic advisement process with the hope of enrich its impact on students.

Our Vision: Growing the Undergraduate Program

How could we grow? First, we might increase the number of applicants to the Program, aiming for 2 applicants for each of

the 40 positions now available. Second, we might increase the actual number of undergraduate students in our program by 50%, giving us three practice cohorts (a practice cohort defined as 20). To do so, we must increase the effectiveness of our recruitment efforts.

On campus, we have begun assertive outreach to other major academic programs on the Norman campus to inform students about careers in social work. Away from campus, we are engaged in collaborative efforts with people like Dr. John Carl of Rose State, Professor Jerry Ludlow of Oklahoma City Community College, and Sharolyn Wallace of Tulsa Community College. Each professor has allowed us to speak in their Introduction to Social Work courses. We accept each course for our program and use the visits to assist students with questions about transfer to the university.

“I don’t know what your destiny will be, but one thing I do know—the only ones among you who will really be happy are those who have sought and found how to serve.”

We begin orientation each year with this statement. The faculty have the privilege of greeting Oklahoma’s future service providers, a grand and rewarding role, and we are grateful for our own chance to serve. Thank you for the support you give us in this endeavor.



Steven P. Wells, Ph.D.,
Undergraduate Program
Coordinator

Practicum Program Update

The practicum program continues grow and expand on both campuses. The Practicum Manual and Practicum webpage have both been revised to reflect our ever growing use of technology in the Practicum program. The Practicum Manual features a new design created by student Shelby J. Kanaly (see picture). Please take some time to visit our revised Practicum website

<http://www.ou.edu/socialwork/practicum/manual.html>

The University of Oklahoma School of

Social Work recognized winners of field education awards at a reception for graduates held in May. Two graduating students in Norman and one in Tulsa were honored as recipients of the Nadine J. Roach Memorial Award. Two field instructors in Norman and one in Tulsa were awarded the Heart of Social Work Award. The Nadine Roach Memorial Award recognizes students who demonstrate the creative synthesis of social work theory and practice in their practicum placements. Practicum instructors

play a pivotal role in the field experience and professional development of social work students. The Oklahoma Heart of Social Work Award recognizes field in-



structors who inspire their students with their commitment to the profession and who serve as models of ethical and professional conduct and service.

Graduate Program Update

We want to fill you in on some of the new things that have been happening with the Graduate Program. Some of these are: a “bridging” course for Advanced Standing, the launch of a full-time program at OU - Tulsa, social work’s growth at OU - Tulsa, greater program flexibility, and, finally, a new capstone course in Direct Practice.

A big change implemented this Summer was the development of a bridging course for Advanced Standing students. The bridging course, “Advanced Standing Seminar” was the first course taken by Advanced Standing students. With the addition of the bridging course, Advanced Standing becomes a 33-credit hour program rather than a 30-hour one. The bridging course seeks to orient Advanced Standing students to graduate school and to provide common preparation for the Concentration work.



Lori Franklin,
Graduate Liaison,
Tulsa Campus

We plan for the bridging course to become part of a 33-credit hour Advanced Standing MSW in summer 2010.

The MSW program at OU - Tulsa continues to grow and change. This fall, the MSW programs on both campuses will be identical with the last implementation piece in Tulsa – the Full-Time MSW program. In spring 2010, OU - Tulsa anticipates graduating around 100 students, including 50 Advanced Standing students. In Norman, we anticipate graduating about 65 MSWs including about 25 in Advanced Standing. Tulsa’s 2010 MSW graduating class comprises about 90 Direct Practice (DP) concentration students and 10 in Administration and Community Practice (ACP). Norman will graduate about 45 DP students and 20 ACP students.

Many may be aware of greater MSW program flexibility, introduced last year. One change is that the final 30 hours of the MSW (also referred to as the Concentration Year; the only hours taken by Advanced Standing students) may now be completed on a part-time basis (two years). Approximately two Norman students and 10 Tulsa students have chosen this route.

And, there is more flexibility in practicum. Students may now elect to do their first-year practicum (the Foundation practicum) either full-time (36-40 hours per week),

during the summer or half-time (18-20 hours per week) concurrent with their classes. The Concentration practicum may now be taken either full-time (36 hours per week) during the students’ final spring or half-time (18 hours per week) during spring and extended through summer.



Anthony Natale,
Graduate Liaison,
Norman Campus

A new course in the Direct Practice Concentration is the Advanced Integrative Seminar for Direct Social Work Practice course taken in the MSW’s final spring semester. As its title suggests, it integrates content from multiple

courses and serves, in essence, as a capstone experience. In both DP and ACP, the Comprehensive Exam (required of non-thesis students) is integrated into a spring capstone course.

A newly created curriculum committee will be examining the MSW and BSW curriculum and improving the courses and program options that we will offer in the future. We certainly are entering exciting times for OU SSW.

Board of Visitors Report

The BOV has continued its busy schedule the past year. One of the highlights was the OU School of Social Work 90th Anniversary Gala held at the Oklahoma Historical Society, in Oklahoma City, where Board Officers and members assisted in planning and enjoyed a memorable evening.

Board members attended while others were program presenters during the NASW 32nd Annual State Conference held March 30-31 and April 1, 2008 at the OU College of Continuing Education. NASW Pioneers Ruth Knee and Ina Javellas joined Virginia Olds, Owen Pollard and Eunice McDowell for a lively discussion and historical review of their social work careers. August 25, 2007 proved to be a significant date when the BOV building Improvement Committee chaired by Mike Fogarty met with OU President David Boren. Committee

members Tim O’Connor, Sue Lunsford, Gail Lapidus, Rietta Miller and BOV Chairman were also present when President announced plans for a new building.

Board, faculty and students joined in mourning the loss and celebrating the life of Markisha Gates, an undergraduate student. The BOV spearheaded efforts to address immediate financial issues faced by Markisha’s family. Supportive contacts and efforts resulted in contributions to the School’s fund in behalf of the Gates family. BOV member Evelyn Seaton deserves recognition for her response enabling immediate provision of food in behalf of the Gates extended family.

The BOV is enthusiastically working with Director Don Baker to launch a History of Social Work in Oklahoma Committee. This committee will be chaired by Dr. David Moxley. It is also working

on a curriculum study committee and a BOV fund raising financial support.

The BOV helped to organize and sponsored the 2009 Annual Social Work Day.



School of Social Work
Board of Visitors

Alumni News

At the University of Oklahoma School of Social Work our alumni are important to us. We hope you will take the time to complete this form to update your information, make a change of address, or simply tell us about your family, career moves, community involvement, awards and honors. Fill out this form and return it to, The University of Oklahoma School of Social Work, 1005 S. Jenkins Ave., Rhyne Hall, Norman, OK 73019-0475. We appreciate your involvement in the School of Social Work! Boomer Sooner!

Change of address

Name: _____ BSW _____ MSW _____ Graduation Year(s): _____

Home Address: _____ City: _____ State: _____ Zip: _____

Telephone: _____ E-mail: _____

ALUMNI NEWS (check here to have this information printed in the next issue of INTERACTION): _____

INTERACTION is a publication of the University of Oklahoma School of Social Work. For questions or comments you may contact the School at:
1005 S. Jenkins Avenue, Rhyne Hall, Norman, OK 73019-0475 Phone: 405-325-2821. Fax: 405-325-7072. Website: www.ou.edu/socialwork



1005 S. Jenkins Avenue
Rhyne Hall
Norman, OK 73109-0475

Phone: 405-325-2821
Fax: 405-325-7072

Non-Profit Organization
U.S. Postage
PAID
University of Oklahoma

Together We Can Change The World