



A Note from our Director...

The School is moving forward as is our new building. The building is being 'buttoned up' and the masons have been deployed, putting the bricks on the building. Manhattan Construction reports they are ahead of schedule and should remain on schedule. Next summer will prove to be very interesting with the move of the faculty and staff to the new building in anticipation of the first semester in our new home.

The faculty are busy with strategic planning and addressing issues related to rising expectations for the School's faculty and students. This has involved changes in the curriculum so that the School is responsive to the needs of the state and garners recognition at the national level; changes to the faculty – recruiting the best and brightest

to our program to move our mission forward; changes to our recruitment of students and to our admissions standards so that we graduate the best students in the state, region, nation and world to our program; and, changes to our culture so that we 'walk the walk' rather than 'talk the talk', as the expression goes.

We have experienced staff changes as well. In Norman, as many of you know, Ms. Donna Vaughn, long time Administrative Assistant, retired this past summer. She has been replaced



Donald Baker, Ph.D.
Director

with Ms. Laurie Bradford, the former Administrative Assistant to the School's practicum program. Laurie, as the School's Managerial Assistant, brings a great deal of experience in higher education administration to her position. Ms. Christine Young has taken the position as Administrative Assistant for admissions and the graduate program and brings a wealth of knowledge and skill to her new job as well. Ms. Diane Freeman, who many of you know, remains at the School and lends her steady hand and experience to the day to day operation of the program.

In Tulsa, we have added Ms. Amy Arnold as an Administrative Assistant. Amy will be working closely with Dr. Julie Miller-Cribbs, the Assistant

(Continued on page 2)

Turley foundation, OU celebrate partnership

by: DAVID HARPER
Tulsa World Staff Writer
TURLEY — The T-shirt that the Rev. Ron Robinson wore on Saturday featured the word "seeker" on it. However, the executive director of A Third Place Community Foundation said the grass-roots, nonprofit, community renewal organization did not seek out a partnership with the University of Oklahoma. "It just kind of happened," Robinson said. A ceremony was held Saturday

at the group's community center, 6514 N. Peoria Ave., to celebrate what has turned out to be a beautiful friendship. During the past few years, the foundation and OU have worked together on initiatives such as a community health clinic, ongoing community forums, nutritional studies and assistance, as well as the establishment of a resource center for graduate social work students to help residents. "We've gained as much from you as you have

gained from us," Ric Munoz, OU clinical professor of social work and community health, told those who gathered Saturday. Munoz said the concept is to move the resources of the university into underserved communities such as Turley, where they can do the most good.

Donna Sonner, a board-certified family nurse practitioner, said she has worked with local residents with the goal of helping

(Continued on page 5)

Inside this issue:

Mental Health Field Unit	2
Staff Spotlight	3
Young & Uninsured in Oklahoma	3
Faculty Accomplishments	4
Practicum Program Update	5
Board of Visitors Update	5
Graduate Program Update	6
CWPEP Update	6
Undergraduate Program Update	7
2010 Summer Institute	7
Program in Community Health Research	7

You can now find us on facebook!

"OU School of Social Work"



We're on the Web!
www.ou.edu/socialwork

Mental Health Field Unit

Andrew Cherry, the Oklahoma Endowed Professor of Mental Health at the Anne & Henry Zarrow School of Social Work, OU-Tulsa, has a vision for a new kind of mental health professional and a different future for people who are severely mentally ill. He is working with a broad range of community services and resources, to design a training ground for an emerging workforce field unit.



(Left to Right): Mary Dillon, Gail Lapidus, Judy Kishner, Henry Zarrow, Bill Major, Mike Brose, Andrew Cherry

The first year of this vision included a foundation year mental health field unit, based in the Mental Health Association of Tulsa. The second year involves a concentration year mental health field unit that will involve Family & Children Services and the Mental Health Association. The Zarrow Family Foundation has gener-

ously provided student stipend funding for the students placed in these field units. Such stipends support student education, encourage students to pursue careers in mental health, and provide innovative educational experiences in social work in mental health.

Unlike traditional MH internships (which focus on diagnoses, case management and treatment modalities) these practicum experiences introduce students to the lives and the world of the mentally ill. In order to know this population as people, students begin by understanding specific housing programs for the mentally ill. Dr. Cherry believes that housing programs, which have been developed by the Mental Health Association, mirror the future of social work practice with individuals who have mental disorders. From there, students follow the well-worn paths through services and institutions frequented by people with mental disorders.

Students become acquainted with the work of Mike Brose, the Director of MHAT, in areas of administration, policy formation (at the local, state and national levels) and the management of a large non-profit advocacy program.

Students also attend a field seminar conducted by Dr. Mary Dillon, as part of their practicum. This experience may include a

presentation by the Zarrow Family Foundation Director, so that students can be exposed to the vital role that philanthropic foundations play in the provision of mental health services in Tulsa and in Oklahoma.

These innovative field units are a rare opportunity for social work students to learn about the systems that mentally disabled people must negotiate in order to meet their needs every single day. The hope is that these students will go forward into their careers offering leadership in a changing world of Mental Health service delivery.

Some agencies included:

- The Mental Health Association, Tulsa
- OU *IMPACT* team (Assertive Community Team)
- Tulsa County Behavioral Health
- Eddie Warrior Women's Correctional Center)
- Mental Health and Veteran's Courts
- Day Center for the Homeless,
- Tulsa Salvation Army Center
- Other meal programs and shelters, hospital emergency room

Baker Continued

(Continued from page 1)

Director in Tulsa. We also have the services of Ms. Laura Kent, Tulsa's Managerial Associate and featured in this issue's 'Staff Spotlight'. The School is fortunate to have such experienced and qualified staff to serve faculty and students.

This year, the University of Oklahoma received funding for AmeriCorps community volunteers. Of the seventy-five student positions received by the University, thirty have gone to the School of Social Work. This funding will help our

students financially as they complete their field work serving disadvantaged populations within the state. The school's attainment of this funding attests to the reputation the School is forging within the larger university.

Finally, the School is moving toward reaffirmation of accreditation by the Council on Social Work Education. Our self-study will be completed by December of 2012 with our site visit to occur in the Spring of 2013. Reaffirmation will be granted, if all goes well, in the fall of 2013. There have been many changes in the Educational Policy Standards (EPAS),

by which CSWE judges programs and the Anne and Henry Zarrow School of Social Work is getting ahead of the curve. With generous funding from Dean Bell, Dr. Miller-Cribbs, myself, and Practicum Coordinators, Barbara Bramble and Sandy Edge-Boyd, will be attending training in the new EPAS.

Readers may note, there are many changes afoot within the School. The faculty and the students they serve are on a path to make the Anne and Henry Zarrow School of Social Work a force in social work education – stay tuned!

Staff Spotlight

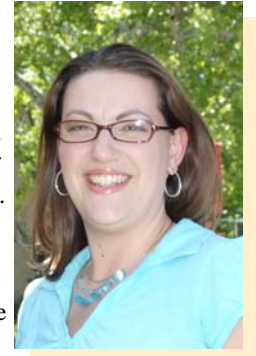
Laura Kent was born in Russellville, Arkansas, due to the fact that her hometown, Belleville, was not large enough for its own hospital. Laura's family moved to Little Rock when she was 7 years old, where she attended Victory Christian Schools through high school. In May 2000, she graduated as valedictorian of her class.

In the summer of 1999, Laura was hired as summer help at Arkansas Department of Parks and Tourism (ADPT) to do Y2K compliance on the computer system for ADPT, including each state park and tourist information center. It didn't take long for them to discover her love for office work. They were able to keep her in the IT department until January, 2002 when she took a full-time, benefits-eligible job elsewhere. Laura began her new job at the

University of Arkansas-Little Rock (UALR), working as a secretary for the Prevention and Substance Abuse Programs of MidSOUTH UALR. While working at MidSOUTH UALR, Laura was promoted to three different positions, two of which were created specifically for her. In March, 2003, during Laura's time at MidSOUTH, Laura married her high school sweetheart, Matt, and they have been married for almost 8 years. They have two children, Caleb (6) and Peyton (3).

In June, 2008, the Kent family moved to Tulsa, in order for Matt to begin training as a pilot at Spartan College of Aeronautics and Technology. Upon moving to Tulsa, Laura found her first private sector job at MIRATECH, working as the reception/office manager until she found her current job in the Social Work Department

at the University of Oklahoma-Tulsa. Laura has thoroughly enjoyed her time at OU-Tulsa and has recently been heard saying "if money were not a factor, I would work here for free." Laura plays such an integral role in the Social Work department, and does a phenomenal job as Managerial Associate in the School of Social Work, Tulsa. Laura loves spending time with Matt and their children, and is excited to see her husband graduate in early 2011 and fulfill his dream of flying.



Laura Kent
Managerial Associate,
Tulsa Campus



Dr. Julie Miller-Cribbs was awarded the OU-Tulsa Presidential Leadership Award for Excellence in Research Development in Spring 2010. She received this award for her development of research on the OU-Tulsa campus and the state.

Young and Uninsured in Oklahoma

Recent reports indicate that the number of uninsured individuals in Oklahoma has reached approximately 600,000 individuals. Of these, almost half of Oklahoma's uninsured are between the ages of 19-34. Despite this high number, relatively little is known about why this group is underinsured or what strategies might encourage

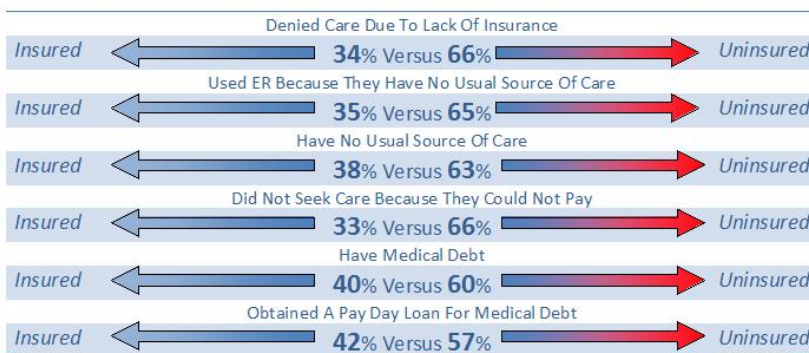
this age group to purchase health insurance. As a response to these alarming figures, the Oklahoma Insurance Department and faculty members of the University of Oklahoma Anne and Henry Zarrow School of Social Work, Dr. Julie Miller-Cribbs, Dr. David Moxley, Dr. Karen Gray, and MSW

student, Lance Cartlidge, collaborated on a statewide survey and focus groups of young, uninsured Oklahomans. The study uncovered barriers to insurance coverage and makes recommendations for addressing this rising health issue. Results revealed that there are serious consequences for young adults living without health insurance, including higher risk for medical debt, great health problems, and poor access to health care services. For a copy of the report, "Survey of Young, Uninsured Oklahomans: Preliminary Report", please contact Dr. Miller-Cribbs.



Lance Cartlidge
Recent Graduate,
OU-Tulsa School of
Social Work

Study Snapshot: Contrasting Health Care Experiences: Insured and Uninsured



FACULTY ACCOMPLISHMENTS



Monica Alzate



Donald Baker



Lisa Byers



Tonia Caselman



Jeanette Davidson



Karen Gray



Julie Miller-Cribbs



Christina Miller



David Moxley



Ricky Munoz



Anthony Natale

PUBLICATIONS:

Allen, J., Mohatt, G., Markstrom, C.A., **Byers, L.**, & Novins, D.K., (2010) "Oh no, we are just getting to know you": The relationship in research with children and youth in indigenous communities. *Child Development Perspectives: Special Issue*.

Byers, L. (2010). Native American grandmother families: Cultural tradition and contemporary necessity. *Journal of Ethnic and Cultural Diversity in Social Work, Special Issue: Women and Aging International: Diversity, Challenges, and Contributions*.

Cross, S., Day, A.G., **Byers, L.G.** (2010). American Indian grand families: A qualitative study conducted with grandmothers and grandfathers who provide sole care for their grandchildren. *The Journal of Cross Cultural Gerontology*.

Caselman, T. (in press). E.Q. University. Westport, Conn: Franklin Learning Systems. Therapeutic Game

Davidson, J. R. (Ed.) (2010). *African American Studies*. Edinburgh University Press.

Davidson, J.R. (2010). Black Studies for the public. Interview with Manning Marable: In J.R. Davidson (Ed.), *African American Studies*. Edinburgh University Press, pp. 96-126.

Davidson, J.R. (2010). Introduction. In J. R. Davidson (Ed.), *African American Studies*. Edinburgh University Press, pp. 1-12.

Davidson, J.R. (2010). Reflections on the journey: Interview with Danny Glover. In J.R. Davidson (Ed.), *African American Studies*. Edinburgh University Press, pp. 76-95.

Davidson, J.R. & Davidson, T. (2010). African American studies: Vital, transformative and sustainable. In J.R. Davidson (Ed.), *African American Studies*. Edinburgh University Press, pp. 281-308.

Farber, N. & **Miller-Cribbs, J.** (2010). Violence in the Lives of Rural, Southern & Poor White Women. *Violence Against Women*.

Miller, C.R., Hinterlong, J.H., & Greene, A.D. (2010). Service learning and students with disabilities: Perspectives from a statewide model program in Florida. *School Social Work Journal*. 34 (2) p. 71-89.

Teasley, M. & **Miller, C.R.** (In Press). School social workers' perceived efficacy at tasks

related to curbing suspension and undesirable behaviors. *Children & Schools*.

Miller-Cribbs, J., Moxley, D., Gray, K. & Cartlidge, G.L. (2010). *Survey of Young, Uninsured Oklahomans: Final Report*. Oklahoma Insurance Department.

Miller-Cribbs, J., Natale, A. P., Cagle, B. E., & Cummings, Z. (2010). Thinking about think tanks: Strategies for progressive social work. *Journal of Policy Practice*, 9(3/4), 284-307.

Natale, A.P. & Baker, D.R. (2010). HIV/AIDS Scholarship: Bibliometric analysis of social work scholars, schools and journals. *Journal of Social Work in Healthcare*, 49 (7), 669-686. DOI: 10.1080/00981380903539467

Natale, A.P. Biswas, B., Urada, L., & Schyette, A. M. (2010). Global HIV and AIDS: Calling all social work educators. *Social Work Education*, 29 (1), 27-47. DOI: 10.1080/02615470902810868

PRESENTATIONS:

Alzate, M. M. (2010, March). Where the Water Meets the Sky, Fred Jones Jr. Museum of Art, University of Oklahoma, Norman, OK.

Alzate, M. M. (2010, April). The Impact of the Body College on Impoverished Afro-Colombian Communities in Cartagena, Colombia, School of Social Work, University of Oklahoma, Norman, OK.

Caselman, T. (2010, April). More than Monopoly: The Use of Therapeutic Games, National School Social Work Association of America, St. Louis, MO

Davidson, J. R. (2010, February). Keynote Address, M.L.K. Jr. Celebration, City of Ardmore, Oklahoma.

Davidson, J. R. (2010, April). Recruitment and retention of faculty members from underrepresented groups, Big 12 Provosts Conference, University of Kansas, Lawrence, KS.

Davidson, J.R. (2010, June). Race, Science and Privilege in the Academy, Crossroads in Cultural Studies International Conference, Hong Kong.

Miller, C.R. & Hinterlong, J.H. (2010, October). National Service and Inclusion of People with Disabilities, Annual Conference of the Council on Social Work Education, Portland, OR.

Fox, M., **Miller-Cribbs, J.**, Hellman, C. (2010,

September). The impact of the Summer Institute: An innovative pre-orientation experiential curriculum in community medicine, Public Health in Medical Education Conference, Association of American Medical Colleges, Cleveland, OH.

Miller-Cribbs, J. & Cox, L. (2010, October). Interdisciplinary Education for Health Professionals: Evaluation of An Innovative Summer Institute, Council on Social Work Education, Portland, OR.

Miller-Cribbs, J., Moxley, D., Gray, K. & Cartlidge, G.L. (2010, April). Survey of Young, Uninsured Oklahomans, National Association of Social Workers, Oklahoma Chapter Conference, Norman, OK.

Moxley, D., Byers, L., Munoz, R., Miller-Cribbs, J., Jaynes, A. & Robinson, R. (2010, April). Turley Talks. National Association of Social Workers, Oklahoma Chapter Conference, Norman, OK.

FUNDED RESEARCH:

Alzate, M. M. Ed Cline Faculty Senate Development Award. Faculty Senate. University of Oklahoma. 2009-2010. Will be used to conduct research during sabbatical year 2010-2011.

Gray, K. A. *Charity loans*. Junior faculty award. OU Office of Vice President for Research.

Gray, K. A. Wetherill, M., Oakley, E., & Appel, M. *Low income access to the Cherry Street Farmers' Market*. SEED grant from Program in Community Health Research .

Miller-Cribbs, J. (Co-Principal Investigator); Photo Voice & SCM Summer Institute Evaluation, School of Community Medicine, May 2010-May2011; \$36,000

Miller-Cribbs, J. (Principal Investigator); SoonerCare Evaluation, Oklahoma Health Care Authority, January 2010- December 2010; \$61,700

Miller-Cribbs, J. (Investigator); Tulsa Children's Project – (OU-Tulsa - Harvard Project), George Kaiser Foundation; \$300,000

Miller-Cribbs, J. (Co-Principal Investigator), Program in Community Health Research, National Institute of Health, INBRE Administrative Supplement Grant; \$409,544 (2 years)

Turley & OU partnership, cont'd

(Continued from page 1)

them make healthier choices. In sharing this message of empowerment through education, Sonner said, she has benefited, as well. "It's been a gem I will treasure for the rest of my life both personally and professionally," she said. As part of Saturday's program, state Rep. Seneca Scott, D-Tulsa, read an official proclamation from the Oklahoma House of Representatives that recognized OU for its programs that have created positive changes in the Turley area, especially in community health and social work. A Third Place Community Foundation's service area is from north 46th to 86th streets and from

U.S. 75 to the Osage County line. The name, A Third Place, comes from Ray Oldenburg's book "The Great, Good Place," which argues home is a person's first place, work is the second, and the third is where people socialize and network. Jeremy Nikel, a graduate assistant, said that working in the Turley area on issues connected to health and nutrition has been a great learning experience. "The big idea is to empower the community," he said. "Not to do the work for them, but to empower residents" to find solutions. "This is only the beginning. There's so much potential here," Munoz said. He also said he would like to see the effort expanded into other similar communities, which

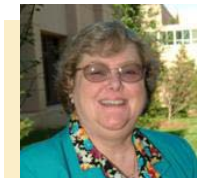
could then work together. Robinson said A Third Place also would like to partner with other universities. —Tulsa World, 6/20/2010



The Rev. Ron Robinson, executive director of A Third Place Community Foundation, speaks during a ceremony in Turley on Saturday celebrating the foundation's partnership with the University of Oklahoma. —MICHAEL WYKE / Tulsa World

Practicum Program Update

The Practicum Program at Norman is making several transformations. Sandra Edge-Boyd, MSW, LCSW, has joined the



Sandra Edge-Boyd
Interim Practicum
Coordinator, Norman

Practicum as the Interim Practicum Coordinator for this academic year. Beginning this fall semester, the OUSSW Norman Program has adopted a new approach to field education for the

foundation year students, in order to better prepare them for field work. Education objectives and practicum seminars for all practicum students are being transformed to address the Council of Social Work Education's 2008 Educational Policy and Accreditation Standards (CSWE EPAS). The new educational objectives address the 10 social work field education competencies required by the CSWE EPAS 2008. Field instructors, faculty liaisons, and fac-

ulty are all involved in these exciting changes.

As highlighted in this newsletter, the Practicum Program at Tulsa is continuing to build and strengthen field units, now available to part-time students in addition to those in the full-time program.

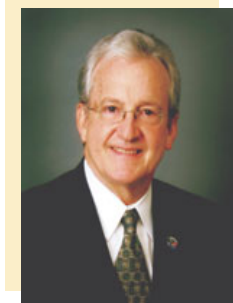


Barbara Bramble
Practicum
Coordinator, Tulsa

Board of Visitors Update

The Board of Visitors (BOV) have been involved in a number of activities and several members were recognized in various award ceremonies.

Board member and Building Committee Chairman, Mike Fogarty, MSW, J.D. was



Mike Fogarty,
Distinguished Alumni
Award Recipient

named recipient of the distinguished alumni Award, OU College of Arts & Sciences.

In addition, former honorary board member, Ruth Ireland Knee, was recognized with the Regents Alumni Award, presented by the OU Board of Regents and the OU Alumni, to

Mrs. Knee's niece, Betty Rasmussen, Ph.D. Board member, Jacqueline B. Cook, MSW, LCSW was awarded the 2010 Oklahoma Social Worker of the year award by the National Association of Social Workers, Oklahoma Chapter.

The following highlights the many activities and contributions of the BOV.

- Ina Javellas MSW, LCSW, participated in a faculty search, and she and Jeff Chace, MSW, LCSW, participated and help plan the 2009 Annual Social Work Day.
- The BOV provided financial support of several events including student fundraising, commencement activities, Annual Social Work Day, receptions for the Knee Center for Strong Families and Mike Fogarty.



Anne & Henry Zarrow
School of Social Work
Ground Breaking, April 2010

Graduate Program Update

These are exciting times for the Master of Social programs on the Norman and Tulsa Campuses.

Advanced standing program officially 33 hours summer of 2010.

The advanced standing program modification to expand to 33 credit hours and include the advanced standing seminar course was approved by the OU regents and became the official degree program for students who entered in summer of 2010. Twenty-seven Norman campus students, and 52 Tulsa campus students engaged in an overview of the generalist foundation curriculum (theory, research, policy, practice), in order to prepare for their graduate concentration coursework. Several of these students took elective courses at the same time, in order to acclimate



Lori Franklin,
Graduate Liaison,
Tulsa Campus

themselves to graduate standards and reduce their fall workloads.

Diversity and Quality of MSW Students continues to rise.

While the MSW programs have increased in size in the past decade, the diversity and quality of students continues to rise. The MSW program is increasing its prominence as a regional and national program, which will be enhanced immeasurably when the Norman campus moves into its new location in cutting edge Zarrow Hall by fall of 2011.

The School of Social Work is a GrEM program participant

The Master of Social Work program applied and was accepted into the University of Oklahoma Graduate College Graduate Enrollment Management (GrEM) program. The program assists departments with their recruitment goals and strategies. In addition, Social Work participation in the GrEM program allows MSW students, who are McNair Scholars, eligibility for additional assistance through a McNair

Fellowship. The school has graduated many McNair Scholars in the past two decades, most recently two in 2009.

Norman Campus hosts Oklahoma State Social Work Educators Forum

The Norman campus will once again host the Oklahoma Social Work Educators Forum. The forum brings together all social work education programs in the state (East Central U., Oral Roberts U., Southwestern Oklahoma State U., Northeastern State U., Northwestern Oklahoma State U.) to discuss common education challenges, trends and opportunities, as



Anthony Natale,
Graduate Liaison,
Norman Campus

well as make linkages in the BSW curriculum across institutions. The forum allows the states educators to maintain their partnership in and commit to the states social work education needs.

Child Welfare Professional Enhancement Program

July 1 began the 17th year of Oklahoma's Child Welfare Professional Enhancement Program (CWPEP). The mission of

CWPEP is to *Enhance and Support Oklahoma's Public Child Welfare Workforce*. In support of this mission, CWPEP recruits BSW and MSW students across the state into the field of Child Welfare and provides graduate social work educational opportunities



Linda Smith, MSW
CWPEP Program
Coordinator

to current Child Welfare Specialists employed by the Oklahoma Department of Human Services (OKDHS). Over 580 CWPEP participants statewide have graduated and gone to work for OKDHS in a Child Welfare position. More than 160 OKDHS Child Welfare employees have returned to school and completed their MSW degrees through CWPEP.

CWPEP is a partnership between OKDHS, The University of Oklahoma and the following educational institutions:

- East Central University (ECU) with a BSW program in Ada & classes offered in McAlester
- Northeastern State University (NSU) with BSW programs in Tahlequah and Broken Arrow through May, 2011
- Oral Roberts University (ORU) with a BSW program in Tulsa
- Southwestern Oklahoma State University (SWOSU) with BSW programs in Weatherford and Altus (added in 2002)
- Northwestern Oklahoma State University (NWOSU) with BSW programs in Alva, Enid and Woodward (added in 2007).

CWPEP provides significant financial support to participating students who make a contractual agreement to work in public Child Welfare at OKDHS. For each academic year of CWPEP financial support, recipients must work 12 months for OKDHS. Academic year stipends are based on the cost of tuition, fees and books. For the 2010-2011 academic year, stipends have been set as follows: OU BSW, \$8280; OU MSW, \$10,035; and other schools' BSW, \$6789.

Most people enter social work in order to make a difference in the lives of others. Public child welfare social work is one of the hardest, most challenging yet most rewarding areas of social work practice. You will never have to wonder if you are making a difference.

For more information call (405) 325-2907 or check the CWPEP website at www.ou.edu/socialwork/cwpep. The application for CWPEP at OU is on the website. The deadline for applications at OU is May 1.

Undergraduate Program Update

As We Are

Twenty-nine students graduated in May 2010 with the Bachelor of Arts in Social Work degree. We congratulate them (and their families), and wish them a bright beginning to their career!

For Fall of 2010, the program admitted one of the largest Junior classes in recent years as 40 students began studies in the social work program.

All together, 73 students are active for School Year 2010-2011. Seventy-one are completing requirements within the degree program, and two are finishing general education requirements. Our BSW program has a diverse group of students.

Imagine the Future

Interviewing Skills for Generalist Practice has been a core feature of this undergraduate curriculum for over twenty-five years.

Dedicating a whole semester to building basic skills for interviewing clients, the course has been a favorite of students. Many alumni talk about how important the course was to their first employment as a social worker.

Imagine you are a new, junior-level social work student at the beginning of your preparation as a social work practitioner. You understand that developing practice skills will be essential to your success. Imagine that the environment you encounter for gaining such skills has state-of-the-art *clinical suites* fully equipped with video recording and playing capability, and observation rooms with two-way mirrors. Imagine this facility is staffed by faculty and graduate students trained in cutting edge practice skills, supported by individuals known as *standardized clients* who can portray almost any client role encountered by a social work professional. As a learner,

you have the opportunity to observe and practice in the most enriched environment possible. The whole course is practically a semester long laboratory.



Steven P. Wells, Ph.D.,
Undergraduate Program
Coordinator

This is exactly what awaits the Juniors admitted for Fall of 2011. Our new building will be equipped with two *clinical suites*, with state-of-the-art equipment and programming.

We hope these facilities will support the evolution of *Interviewing Skills for Generalist Practice* into a rich, complex laboratory for skills acquisition for Juniors in our School. What an exciting future is just ahead for students and faculty!

2010 Summer Institute

This summer marked the third annual School of Community Medicine Summer Institute. There was a visible social work



presence in the 2010 Institute, including 14 social work student participants, 4

graduate research assistants, and several faculty members. Professor Ric Munoz is the most recent faculty member to join the Faculty Academy and Julie Miller-Cribbs is now a three year veteran of the institute. Lori Franklin facilitated a powerful poverty simulation and several social work faculty collaborated on an innovative, interdisciplinary PhotoVoice project. The Summer Institute is an innovative, experiential examination of healthcare in Tulsa which includes an interdisciplinary group

of faculty and students. More information about the Summer Institute can be accessed at: <http://tulsa.ou.edu/socm/>

Students participating were:

Jeannette Brown, Teresa Brown, Rachel Ficken, Cassidy Fulton, Virginia Harrington, Gloria Miller, Trishia Pratt, Marisela Schloss, Jessica Seachris, Matthew Seabourn, Martina Swoboda-Wiedel, Brian Timms, Brenda Watkins, and Jasmine Wilson

Program in Community Health Research

In collaboration with Dr. Mark Fox and Dr Jennifer Hays-Grudo, faculty member Dr. Julie Miller-Cribbs received funding for a Program in Community Health Research from the NIMH. The **Program in Community Health Research** (a research, training, and faculty development program) is dedicated to advancing community-based research to improve the health status of low-income communities and their members, in Tulsa and beyond. The specific aims of this project are:

- To develop capacity in community-based research, targeting health dis-

parities through the development of training workshops and conferences for faculty and students from OU and the Primarily Undergraduate Institutions (PUIs).

- To support the conduct of community-based research, through a **SEED** grant mechanism to teams composed of faculty and students, as well as identified community partners.
- To stimulate interest in community based research, through an undergraduate summer internship/mentored research experience.

There is a current call for participatory research proposals, focused broadly on the improvement of health in Oklahoma Communities. The Program in Community Health Research includes supporting community-based research, through a seed grant mechanism, to teams composed of faculty and students, as well as identified community partners. Social work faculty from around the state, as well as social workers with projects related to community health, are encouraged to apply. For more information visit:

<http://tulsa.ou.edu/pchr/index.htm>

Alumni News

At the University of Oklahoma School of Social Work our alumni are important to us. We hope you will take the time to complete this form to update your information, make a change of address, or simply tell us about your family, career moves, community involvement, awards and honors. Fill out this form and return it to, The University of Oklahoma School of Social Work, 1005 S. Jenkins Ave., Rhyne Hall, Norman, OK 73019-0475. We appreciate your involvement in the School of Social Work! Boomer Sooner!

Change of address

Name: _____ BSW _____ MSW _____ Graduation Year(s): _____

Home Address: _____ City: _____ State: _____ Zip: _____

Telephone: _____ E-mail: _____

ALUMNI NEWS (check here to have this information printed in the next issue of INTERACTION): _____

INTERACTION is a publication of the University of Oklahoma School of Social Work. For questions or comments you may contact the School at:
1005 S. Jenkins Avenue, Rhyne Hall, Norman, OK 73019-0475 Phone: 405-325-2821. Fax: 405-325-7072. Website: www.ou.edu/socialwork



1005 S. Jenkins Avenue
Rhyne Hall
Norman, OK 73109-0475

Phone: 405-325-2821
Fax: 405-325-7072

Non-Profit Organization
U.S. Postage
PAID
University of Oklahoma

Together We Can Change The World