



Interaction

The University of Oklahoma

School of Social Work
Spring 2002

From Our New Director

OU School of Social Work

Inside this issue:

- Social Work Professors Awarded* 2
- Child Welfare Professional Enhancement Program* 3
- New Faculty Members* 4
- Board of Visitors* 5
- Child Welfare Training for American Indian Tribal Agencies* 6
- Lend - An Interdisciplinary Training Program* 7
- Changes in the Graduate Program* 8



Dr. Roosevelt Wright, Jr.
Director

As the new Director of the School of Social Work, I am pleased to have the opportunity to share a few words with our many alums and friends. The School of Social Work is thriving in all aspects. At the inception of the present academic year [2001-2002], 55 new graduate students enrolled in our Master of Social Work [or MSW] degree program. As a result of these new enrollees, the graduate program has a total enrollment of 189 students. The pattern of enrollment that emerged in the MSW program during the past several years remains essentially unchanged during the current academic year; that is, about 55% of the students in the program are enrolled full-time and about 45% are enrolled part-time. Enrollments in the baccalaureate degree program [BSW] have been relatively stable over the past five or so years averaging around 80 student majors per year. At the present time, there are 75 program majors [38 juniors and 37 seniors].

The school's extramural funding [from research support grants and specialized training contracts] is at an all time high. Figures for the current academic year indicate that our external funding is well over 2.1 million dollars. Sources of such funding include primarily federal and state agencies and organizations including the United States Department of Health and Human Services and the Oklahoma Departments of Human Services, Mental Health, and Transportation. The School's relationships with these agencies and organizations, as well as our collaborative partnerships across the university and in the broader community are very strong.

As the onset of the 2001-2002 academic year, five new full-time faculty members began academic appointments with the School of Social Work here on the Norman campus and at the off campus site located at the University of Oklahoma's Schusterman Center in Tulsa, OK. New faculty members include Wanda W. Priddy, Ph.D. [Norman], Sondra Burman, Ph.D. [Tulsa], Tonia Caselman, Ph.D. [Tulsa], Kim Stauss, M.S.W./ABD [Tulsa] and, of course, myself. At present, the School has 17 full-time faculty, 13 part-time and/or adjunct faculty, 5 professional staff [i.e., directors and/or coordinators of special projects], and 5 administrative support staff. A search for two new full-time faculty members has already begun and it is . . . Continued on page 3

Social Work Aging Program Receives Funding

The Social Work Aging Program has received funding for the 2001-2002 academic year from the University Hospitals Trust in coordination with the OUHSC Donald W. Reynolds Department of Geriatric Medicine. The grant will help the program further its goals of acquainting all social work students with aging issues and developing a cadre of students with special expertise in social work gerontology. This includes a new course "Social Work Practice in Aging", specialized practicum placements in aging settings, rotation experiences in the continuum of services for older persons, and special activities with students receiving scholarships from the grant.

In addition to scholarships from the UHT grant, six 2nd year MSW students will be awarded scholarships for 2001-2002 from the John A. Hartford Foundation. This group of students will be participating in special educational activities to prepare them to work in the aging field and will be completing a research paper related to aging issues in Oklahoma.

Sandra Edge-Boyd, Director of the Social Work Aging Program, notes that Social Workers and other specialists in the area of aging serving on the SWAP Consortium have been very helpful in the development of the program. A fund in support of the program has been established at the University of Oklahoma Foundation. For more fund information or other questions relating to the OU School of Social Work Aging Program, please contact Sandra Edge-Boyd.



Sandra Edge-Boyd

OU Social Work Aging Program

(405) 325-1351

Skedgeboyd@ou.edu

Social Work Professors Awarded Research

Two researchers at the University of Oklahoma's School of Social Work have been awarded a \$468,000 contract over 3 years to help prevent substance abuse among Oklahoma's youth through the State Cooperative Incentive Agreement. Donald Baker, associate professor of Social Work and Kenneth Wedel, professor of Social Work, are co-principle investigators on the project that will target 12 to 17 year olds. "Combined with the use of tobacco products, the abuse of illegal drugs and addiction to alcohol comprise Oklahoma's number one public health problem," said Baker, senior evaluator for the SICA project. "This problem consumes nearly one out of every eight dollars in wealth produced in our state." According to a 1998 report from the National Center on Addiction and Substance Abuse at Columbia University, 13.1 percent of state budgets, or \$81.3 billion annually, went to deal with substance abuse and addiction. Of every dollar the states spent on alcohol, tobacco, and other drug services in 1998, 96 cents went to "shoveling up" or cleaning up the problem, mostly through law enforcement services, and only 4 cents went to prevention. In addition, states spend 113 times as much to clean up substance abuse problems as they do to treat and prevent them. "We know that a child who reaches the age of 21 without exposure to alcohol, tobacco, and other drugs is virtually certain to never do so," said Baker. "This is a robust finding that drives the marketing strategies of the biggest drug dealers in America, the tobacco and alcohol beverage industries. If they can hook our children at an early enough age they have a life long consumer and it is this life-long consumption that produces the social conditions that have to be addressed at the state level. Everyone pays through increased costs for law enforcement and health care. An Oklahoma resident pays \$277 each year to deal with the burden of substance abuse and addiction and only \$10 a year to prevent the problem. It has also been estimated that for every \$1 spent on prevention, \$4 is saved in social costs, clearly a bargain."

To combat the problem, Baker and Wedel will assist in the development of a statewide, comprehensive, prevention strategy that empowers communities to take action to reduce use of alcohol, tobacco, and other drugs among Oklahoma's youth

through the application of science-based prevention models. The researchers will work with state government to coordinate, redirect and leverage, as appropriate and legally permissible, all federal, state and community funding streams for alcohol, tobacco, and other drug prevention. Baker said, "we are referring to the use of needs assessment data systematically collected from the target youth population that gauges their perceptions of risk and protective factors present within the local community. It is this entire process of needs assessment, planning based on data, and selection of models to fit the identified needs that constitute science-based prevention."

4 cents spent on prevention compares to every ninety-six cents spent to clean up the

Council on Social Work Education 2002

The 48th Annual Conference was held on February 24-27, 2002 in downtown Nashville, Tennessee at the Grand Ole Opry Hotel.

More than 350 papers were presented this year. The sessions has focused on research issues concerning education and human services. Of course, there is an early-bird bonus for those who sign up in a timely manner for the conference.



CSWE would also like to remind people that are interested, it is not a requirement to be a CSWE member to attend or take part in the annual program meeting.

For more information see:

CSWE.org

Director News

Continued from page 1

anticipated that these faculty will be on board by the start of the 2001-2002 academic year.

In preparation for the School's reaffirmation of accreditation [by the Council on Social Work Education] of its MSW and BSW programs in the year 2005 [which may seem like it is in the distant future], our faculty is beginning to put in place a self-study modus operandi that will include a systematic, rigorous, and in depth analysis of our organizational, programmatic, and curricular structures and elements. This will, indeed, be an exciting process and we anticipate that it will also be an ideal state of affairs on which the School can continue to build and move forward in its never-ending quest for optimal quality and eminence in its social work programs.

We here at the School would like to hear your reactions to the directions in which we are moving. As the new Director, I personally invite anyone who is interested in the programs and projects that we offer to visit us at the School of Social Work, Rhyne Hall, 1005 South Jenkins Avenue, Norman, OK or you can visit our off-campus program at the OU Schusterman Center Tulsa, OK. You can also contact me personally at [405] 325-9834 or via e-mail at: rwright@ou.edu. On behalf of the School of Social Work, I would like to thank all of you for your past and continuing support.

Thanks very much and I look forward to meeting many of you in the future!

Roosevelt Wright Jr., Ph.D. Professor and Director



Enhancement Program for Oklahoma Child Welfare

The Child Welfare Professional Enhancement Program, formerly known as Title IV-E, is a partnership between the University and the Department of Human Services. The purpose of the program is to recruit BSW and MSW students into the field of public child welfare. The program offers stipends to Junior and Senior BSW students and to MSW students interested in a career in child welfare. (\$450 per month for BSW and \$600 per month for MSW.)

The program can award up to 25 stipends per year for BSW students and up to 10 stipends per year for MSW students. To become a participant in the Child Welfare Professional Enhancement Program, Junior and Senior BSW students and MSW candidates need to make an application, write a brief essay as to their interest in a career in Child Welfare, complete a background check with the Oklahoma State Bureau of Investigation, and a driving record check with the Department of Public Safety. Applicants are interviewed by a team of Department of Human Services staff and CWPEP staff.

If accepted into the program, the student must sign a legally binding contract that obligates them to work in the Department's Child Welfare program for one calendar year of employment for each year of financial assistance. Repayment of the funds expended for the student is required if the employment obligation is not met. Students are required to take certain Child Welfare related classes and to complete a practicum placement in a DHS Child Welfare setting.

While a career in Child Welfare is not for everyone, those that choose these challenges find the work exciting and rewarding. Child Welfare work is complex and requires an extraordinary commitment from professionals. No other social work career offers the vast opportunity to work with the array of professionals within the legal framework charged with the protection of children. Child Welfare social work is like no other social work environment.

If you are interested in Child Welfare as a career, please contact us at (405) 325-2907 or e-mail mscales@ou.edu. Watch for our poster in the School of Social Work.



New Faculty Members

Sondra Burman, Ph.D., Associate Professor in the School of Social Work/Tulsa. She joined the faculty in August 2001, after teaching and doing research (primarily in the area of substance abuse) at Rutgers University in New Brunswick, New Jersey. Prior to receiving her Ph.D. from the University of Illinois, Urbana/Champaign, she was in substance abuse practice in Houston, Texas, working with individuals, families, and groups.



Tonia Caselman, Ph.D., Lecturer, OU Tulsa: B.A., Oral Roberts University; M.S.W. University of Oklahoma, 1987; Ph.D., Oklahoma State University in the area of Family Relations/Child Development Department 2000. Received training in family, divorce and business mediation, death and dying, relationship enrichment, stages of homosexual coming out, Attention Deficit Hyperactivity Disorder, women's issues in the helping profession, brief therapy and managed care, assessment of preschoolers, child behavior and development, and sexual abuse.



Kimberly Stauss, M.S.W., Instructor, OU Tulsa: B.S., Stephen F. Austin State University, 1985; M.S.W., California State University, Sacramento, 1991; ABD, University of Utah. Kim will be working on her dissertation this summer. Her interest is children's mental health and women's issues. Before coming to OU, she was a full-time instructor at Northeastern State University Tahlequah, Oklahoma. She also worked as an out-patient therapist for the Oklahoma Center for Therapy in Tulsa, Oklahoma.



Leela Thomas, Ph.D., Assistant Professor from India, earned her B.S. from Bombay University, India, her MSW from both Bombay University and Washington University in St. Louis and her Ph.D. from Washington University in St. Louis, in 1995. She joined the faculty in August, 2000 and teaches Research Methods at the undergraduate level. Before coming to OU, she taught courses on Health Care Policy, Statistics, Research Methods, and Program Evaluation at The Ohio State University.



She has done research on Sudden Infant Death Syndrome; teen pregnancy; diabetes and depression; diabetes and smoking cessation; and health care delivery systems with a focus on managed care plans. She has also presented her work at national conferences of the Society for Social Work and Research, Association for Health Services Research, and American Public Health Association. Currently, she is the Principal Investigator of a project on the study of alcoholism in three American Indian tribes and Leadership Identification Committee for the Cleveland County Branch.



Wanda Wahnee Priddy, Ph.D., ACSW, Assistant Professor joined the faculty of the School of Social Work in August, 2001. Her educational background includes a Ph.D. in social work education from the University of South Carolina in 1998; an MSW from the University of Kansas and a BA in Sociology from Southwestern Oklahoma State University. She teaches practice at both undergraduate and graduate levels and serves as Principle Investigator for the Indian Child Welfare Supervisors Training Project. Her research interests include diversity issues in field education, field instructors' training, health/mental health issues with Native Americans, and diversity in the social work curriculum. Dr. Priddy has 18 years of direct practice experience in forensic social work, financial assistance, medical social work and mental health.



Prior to joining the faculty at OU, Dr. Priddy taught in the social work program at the University of Arkansas at Fayetteville. She assisted the Field Director while at the University of South Carolina. As part of her doctoral practicum, Dr. Priddy designed and implemented training for field instructors which was adopted and replicated by the USC-College of Social Work. Her interest in field education stems from serving as the Practicum Coordinator at Northeastern State University in Tahlequah.

Dr. Priddy is a member of NASW. She is a member of the Board of Directors of the Association of Baccalaureate Program Directors, the undergraduate social work educators group. She also is a member of the American Indian Social Work Educators. Dr. Priddy is a member of the Comanche Nation of Oklahoma.



Board of Visitors Report



During June, 2000 Julia M. Norlin, Ph.D, Director, School of Social Work, University of Oklahoma, Norman finalized plans for the establishment of a Board of Visitors. Prior to this time there were advisory boards for the Norman and Tulsa campuses. It was decided that Program Advisory Committees for these two sites would better serve the School's overall program. Dr. Norlin identified the increasing demand for social workers and existence of static resources as key factors contributing to both agency and community problems. The School and community needed joint thinking and establishment of a plan of action. A community mechanism was needed by the School that would identify specific needs of emerging and changing social work jobs in Oklahoma.

In consultation with faculty, agency and professional leaders, Dr. Norlin appointed thirty one individuals to the Board of Visitors. The initial Board meeting was held on June 30, 2000 at the University of Oklahoma Memorial Union. Ruth I. Knee, MSW, was named an honorary member of the Board. Sue Settles, MSW, then Executive Director, Oklahoma Chapter of the National Association of Social Workers, convened the Nominating Committee with assistance from members Wayne Chess, Ph.D. and Ann Simank, MSW. The committee also prepared a By-Laws draft.

Prior to the second meeting of the Board of Visitors on October 27, 2000, Kenneth Wedel, Ph.D., was appointed as the Interim Director of the School of Social Work following Dr. Norlin's retirement. During this meeting the Board adopted By-Laws. The Board's primary purpose and mission is to advise and make recommendations to the Director of the University of Oklahoma School of Social Work on matters pertaining to relationships with alumni, the professional community, human services agencies and other matters that would advance the School's academic, research, and service goals. Board membership shall consist of at least thirty and no more than fifty distinguished alumni, donors, and friends for the School. New members are identified by the Board's Nominating Committee and appointed by the School's Director. Full-time faculty and staff may serve in a consulting role or as visitors and shall not be voting members. The membership term is three years with a maximum of two consecutive terms. Approximately one-third of the active membership will be appointed/reappointed each year. The Board will meet at least twice a year, typically in the fall and spring semester. The following officers were elected during the October, 2000 meeting: Chair, Ina J. Javellas, MSW, Norman; Vice Chair, Gail Lapidus, MSW, Tulsa; Secretary/Treasurer, Robert Lee, MSW, Norman.

During the October, 2001 Board meeting Roosevelt Wright, Ph.D. was welcomed as the School's newly appointed Director. Sue Lunsford, MSW, Ponca City, is serving as the Chair of the Development Activities Committee. The mission of this Committee is to coordinate efforts between the Board and School in identifying School and agency needs and selecting mechanisms and options for mobilizing alumni, donors, and friends in enabling the School to meet its academic, research, and service goal.

The Board of Visitors joined the School of Social Work in hosting a visit by Senator Joseph Lieberman, Democrat, Connecticut, to the School on January 15, 2002. Senator Lieberman, brother of Board member, Rietta Miller, MSW, Norman, discussed social welfare policy initiatives at the federal level. He also discussed a recent trip with nine other legislators including Senator John McCain, Republican, Arizona to the Afghan region. Senator Lieberman is recognized as the first Jewish American to be nominated for the office of Vice-President of the United States. Lieberman delivered a noon keynote address entitled, "Reforming Government and Strengthening National Security" as part of the "Future of American Politics Series" at noon in the Oklahoma Memorial Union Ballroom. The Speaker's Bureau sponsored the Senator's visit and was assisted by the Office of the President and the President's Associates Program.





Child Welfare Training for American Indian Tribal Agencies

The University of Oklahoma School of Social Work was awarded federal funding during fiscal year 2001 to conduct Indian Child Welfare Supervisors' Training for American Indian Tribal Agencies (ICWST). The three year, \$600,000, grant will provide training for Indian tribes located through-out the Southwestern United States, including Arizona, California, Kansas, Oklahoma, New Mexico, and Texas. The ICWST Project is designed in three phases with the following objectives:

1. Assessment of training needs among tribal ICW Supervisors,
2. Development and administration of supervisor training curriculum,
3. Creation of network linkages and collaboration among ICW Supervisors in the Southwestern United States; and
4. Dissemination of the completed curriculum to ICW programs nationwide.

During the first program year, activities undertaken to formally initiate the training curriculum are focused on laying the groundwork for implementation of Phase I of the project. A needs assessment survey was conducted to gather data from tribal agencies throughout the service area. Training workshops will be conducted in the following locations: Tulsa and Lawton, Oklahoma; Albuquerque, New Mexico; Tucson and Window Rock, Arizona.

Advisory Board Members for the project are Philip Lujan, J.D., Tribal Judge for the Southwestern Tribes of Oklahoma and Professor in the Department of Communication; Valerie Lane, Esq., Attorney and expert on ICWA; Retha Murdock, Chief Social Worker, BIA; Antonia Dobrec, MSW, President Three Feathers Agency; Gay Munsel, Program Supervisor, NRC staff; and Elizabeth Davis, MSW, Tribal Liaison DHS. Principal Investigator for the project is Assistant Professor, Wanda Priddy, Ph.D. Project Director, is Eunice McDowell, ACSW. Full details of the project may be found at the project website: www.icwst.org, maintained by Webmaster, Rex Suba. The internet website will be utilized in Phase III for long term follow-up with tribal supervisors.

Marc Bonge Honored By WICSEC

Marc Bonge Receives Award—After 21 years with Child Support Enforcement Division he has been honored by the Western Interstate Child Support Enforcement Council, WICSEC, an organization comprised of child support enforcement agencies west of the Mississippi. Bonge has worked to increase lump-sum, worker's compensation collection in Oklahoma by more than \$1 million a year. Marc is dedicated to working for the children of Oklahoma and this does not end at the office. He has volunteered at many agencies and has worked with Oklahoma legislators to create more effective laws regarding children's issues.

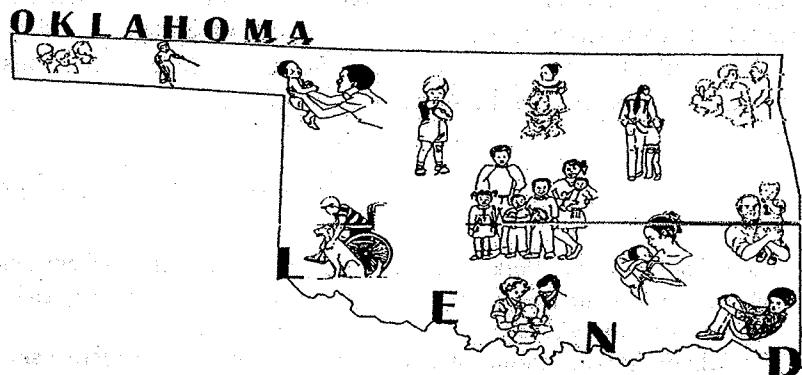
Congratulations, Marc.



SCHOOL ESTABLISHES LINK WITH INTERDISCIPLINARY TRAINING PROGRAM

The School of Social Work has become a full partner in a national program that utilizes an interdisciplinary approach to train professionals and advanced graduate students to serve children with disabilities and their families. Beginning in August of this year, the School established ties with the Leadership Education in Neurodevelopmental and Related Disabilities Program centered at the University of Oklahoma Health Sciences Center campus in Oklahoma City. Funded by the Maternal Child Health Bureau of the U.S. Department of Health and Human Services, "LEND" offers a year long leadership training program to physicians, nurses, therapists, and other allied health professionals. Currently, thirty-six LEND Programs in twenty-nine states provide critically needed leadership and clinical training to professionals. Eleven disciplines, including social work, are incorporated into the effort. One unique component of the Oklahoma LEND program is the development of the Core Faculty member position for Family Advocate, which is filled by a family member of a child with a disability, a component now incorporated into many of the other state programs.

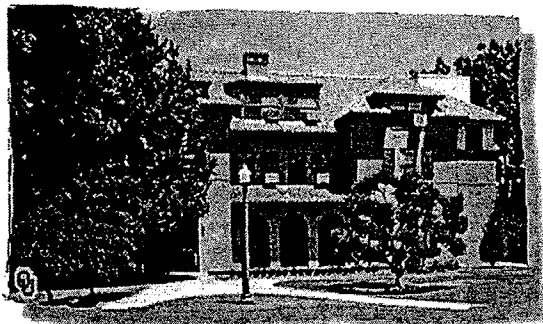
Steven P. Wells, Clinical Assistant Professor, has been chosen to serve as LEND Core Faculty Member for Social Work. Core Faculty Members dedicate twenty percent of their time to LEND related activities. Professor Wells will assist with the recruitment of future LEND social work fellows, will meet regularly with fellows from each discipline to serve in a mentorship role, and will assist with some instruction in the leadership seminar. In addition to this, he will assist in the development of interdisciplinary training for professionals already serving children with disabilities and their families. The School will receive a fifteen percent salary offset for these duties. This is the first year that a full time professor from the School has served in the Core Faculty position.



Ms. Jamie Birdsong, second year graduate student, was selected as the LEND Fellow for social work for the 2001-2002 academic year. Ms. Birdsong will be supported by a LEND stipend of \$350.00 a month for nine months, as well as by other development funds. She has recently returned from a conference held in three Central American countries that addressed the needs of youth at risk in developing nations. Her travel was supported by LEND funding and by the University of Oklahoma Office of International Relations. Ms. Birdsong has already made a significant contribution to the program based upon her past experience teaching at-risk students with disabilities in New York City as well as in Guatemala.

Several School of Social Work students have already completed fellowships in the LEND program, beginning in 1995. Among those are Dana Gammill, Robyn Howerter Weiser, Elaine Eddens, Carla Hetherington, Evelyn Seaton, and Gina Babka. Dr. Linda M. Wilson, LEND Instructional Faculty Member, has been highly complimentary of these social work fellows and stated their contributions have provided the School of Social Work with an excellent reputation within the LEND program.

Changes in Graduate Programs



The big change in the graduate education is the Fall Semester 2001 start-up of the Advanced Standing masters option at the OU-Tulsa Program. About 20 advanced standing students will join 20 students matriculating through the part-time program to form a cohort of about 40 who will graduate in the spring of 2003. Through advanced standing, students who have graduated from accredited BSW programs earn their OU MSW degrees in nine months (30 semester hours credit).

As presently organized, the Tulsa-based Advanced Standing program is funded on a trial/demonstration basis for up to

three years. Hopefully, the program will demonstrate a strong demand for advanced standing in northeast Oklahoma and pave the way for permanent University support.

With the addition of Advanced Standing, OU now graduates about 105 MSW's each year, about 65 in Norman and 40 in Tulsa. In Norman, about 45 students graduate through the Direct Practice concentration and about 20 through Administration and Community Practice. All Tulsa students concentration is in Direct Practice.

Many potential applicants will be pleased to learn of the following change in admissions requirements: the Graduate Record Exam (GRE) is no longer required. After considerable debate, the faculty voted to discontinue the GRE because: 1) it is expensive, 2) it discourages some from applying, and 3) there were concerns about cultural and class bias. Hopefully, the elimination of the GRE will increase applications and help the School develop a talented group of students from diverse backgrounds.

Mission and Goals

The School of Social Work, through its programs of professional education, research and public service is dedicated to the enhancement of human well-being and to the alleviation of poverty and oppression through developing and improving systems of social services, especially public social services.

The School's primary means of achieving its mission is by preparing skilled social work practitioners who are committed to practice that includes services to the poor and oppressed, by improving and developing social service programs, and by promoting professionalism in social work in Oklahoma. To this end the School offers two degree programs: an undergraduate major in social work leading to a Bachelor of Arts and a graduate program leading to a Master's of Social Work. The mission and goals of the School are consistent with those of professional social work education and of the University of Oklahoma. The School's goals are:

1. to educate skilled social workers who can effectively serve individuals, families, groups, organizations and communities;
2. to increase the availability of skilled social work professionals, particularly from minority groups; and
3. to develop and strengthen social services through:
 - a. scholarly activities which elaborate and explicate issues relevant to the enhancement of human well-being and the alleviation of poverty and oppression;
 - b. research and evaluation activities aimed at facilitating effective practice and the generation of knowledge;
 - c. consultation and leadership to emerging and existing social service programs; and
 - d. continuing education and training.

The School prepares practitioners who will use an integrated combination of knowledge, values and skills in service to diverse client and community systems. The undergraduate program and the foundation requirements of the graduate program are based on a generalist model that emphasizes skills, knowledge, and values basic to all social work practice. In their candidacy year (final year) of graduate study, students take one of two concentrations: 1) Direct Practice (DP) or 2) Administration and Community Practice (ACP). Only the Direct Practice concentration is offered at OU-Tulsa.

Contribution to Assist the School

I wish to contribute \$ _____ to the following fund program.

- Annual Social Work Day
- Deborah Grace Toops Memorial Scholarship
- Eloise Reynolds Scholarship
- George Rogers Scholarship
- Heritage Scholarship
- Julia M. Norlin, Ph.D. Social Work Scholarship
- Junior Koenig & Ruth Irelan Knee
- Lennie-Marie P. Tolliver Lectureship
- Man Keung Ho Minority Student Scholarship Fund
- Michael P. Flanagan Scholarship
- Nadine Roach Memorial
- Rev. Key and Anna Ketcher Scholarship
- Social Work Aging Fund
- Terry Davis Memorial Social Work Fund
- Value and Ethics Chair Social Work
- Vilona P. Cutler Loan and Development
- Virginia Olds Practicum Enrichment Fund
- Wayne A. Chess Scholarship Fund

Mail contributions to the OU Foundation or the School of Social Work, The University of Oklahoma, Norman, Oklahoma, 73019. Checks should be made payable to the OU Foundation.