

THE UNIVERSITY OF OKLAHOMA

INTERACTION

Norman, OK

SCHOOL OF SOCIAL WORK

Summer 2007

Celebrating 90 Years of Social Work Education

90th Anniversary

Inside this issue:

Director's Report	2
Board of Visitors Report	3
Practicum News	4
CWPEP	5
OU - Tulsa Program News	6 & 7
Program Updates	8 & 9
90th Anniversary Gala	10

Message from:

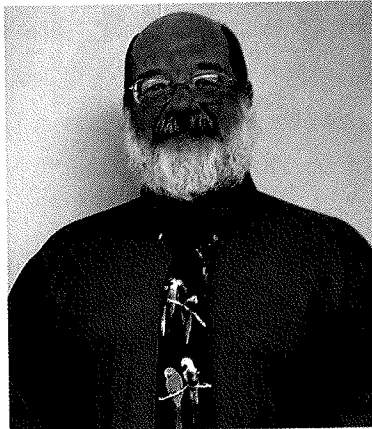
- Our Director

Upcoming Events:

- 90th Anniversary Celebration

Director's Report

By Donald R. Baker, Ph.D., Director



According to a recent journal article, the University of Oklahoma School of Social Work was ranked 39th out of 69 graduate social work programs based on the mean of all professional journal rankings of scholarly productivity published from 1990 to 2003 (Feldman, 2006). Clearly the School is 'up-there' with many fine programs across the nation in terms of faculty productivity. As Feldman points out, scholarly productivity is only

one measure of the quality of a social work education program. Other variables that influence reputation include: the leadership positions of the School's graduates; the size, stature and relative influence of the School's alumni; the content, quality and coherence of the School's educational program; the quality and effectiveness of the School's teachers; and, perhaps most important, the extent of learning and practice effectiveness of the School's graduates. There is much to do to bring the School of Social Work to the point of prominence that its alumni, students and faculty desire and deserve. In this brief message, I will focus on a discussion of the things that the School and its faculty are doing and planning to improve the practice effectiveness of the School's graduates and raise the status of the School within the State, region and Nation.

We are growing our faculty resources. We have recently added Dr. Susy Villegas to our practice faculty at OU-Norman. Dr. Villegas will be teaching in the area of advanced direct practice with a specialty in families. We will be recruiting another Assistant Professor for the direct practice area in the fall of 2007 and with these additions our Direct Practice faculty will become stronger and better able to serve our students in this important area of our curriculum.

We have also added a Clinical Assistant Professor to the OU-Tulsa program. Ms. Lori Franklin, formerly of Tulsa Family and Children's Services, will be joining the Tulsa faculty this fall and will teach in the area of direct practice. In the fall we will also be recruiting for an Assistant Professor position to replace Dr. Sondra Burman who will be retiring from our faculty in August, 2007. I want to take this opportunity to wish Dr. Burman well in her future endeavors.

We had a very busy academic year with the faculty working hard to reorganize both the program and the curriculum to better address the needs of our students. We have developed an integrative seminar for the second year Direct Practice students to establish a stronger linkage between theory-based course work and the all important block field practicum that students take in their very last semester of the program. We have created more flexibility in our program so as to allow students to extend their educational process if needed. For example, our Advanced Standing students, those who are in our nine month accelerated program, can actually extend their education over an additional year if needed. We are also extending our Administration and Community Planning concentration to OU-Tulsa which will place the complete 2nd year curriculum in Tulsa beginning in the fall of 2007. The faculty thinks

that these changes create a more flexible approach to graduate education and a more 'student friendly' educational experience.

To guide us in our program and curriculum planning efforts, the School has sponsored two retreats over the last year – one in the spring with the School's Board of Visitors and one in the fall for the faculty. The second retreat has built on our first effort with the BOV and has allowed the faculty to focus on four areas of concern as we move the program forward: increasing faculty scholarship and productivity; increasing the rigor with which students are taught within the program – particularly in reference to professional writing; seeking ways to better support students financially; and, working to develop stronger public relations with the larger University and the social work professional community.

The School is becoming very future directed – with a number of new forward looking initiatives I would like to mention. The faculty is looking to strengthen our relationship with the OU Health Sciences Center. We have already been working with Allied Health to increase our involvement in the Gerontological Certification program, an effort that we are coordinating with Ms. Sandra Edge-Boyd. We have most recently begun to work with the Department of Psychiatry and Behavioral Sciences to enhance our course content in the area of chemical dependency treatment. This semester we have placed our very first student with Ms. Donna Hammond, the social work faculty member in the Department. We are also beginning to work on an infant mental health initiative with Ms. Karen Irely and the Infant Mental Health Association – a project that is also in its infancy, so to speak, but offers real promise to the School's efforts to strengthen its involvement in mental health more generally and the nexus of child welfare and mental health more specifically.

Last, but certainly not least, the School is collaborating with the department of Modern Languages and Literatures within the College of Arts and Sciences to develop an online course in Spanish for Social Workers. Mr. Luis Silve, a faculty member in MLL, is preparing this course and we will be offering this course in the spring of 2008. We are planning to extend this course offering to the practice community as a continuing education opportunity and will be looking into the possibility of providing continuing education units to social work practitioners taking the course. I would like to thank Dean Paul Bell and Ms. Karen Cozart for their support and help in making this course a reality. I think it fits a present and future need of the social work practice community in Oklahoma.

As a closing note, I would like to remind the reader that the School is coming on its 90th birthday celebration – an event that coincides with the 100th anniversary of the State. This suggests how integral the development of social work within Oklahoma has been to the development of the State. Dr. Julia Norlin, former Director of the School, has graciously consented to be the Chair of the planning committee for our upcoming birthday party. We will be convening social workers, alumni, and friends of the School at the Oklahoma History Museum on the evening of October 26, 2007 for this event. I wish to thank Judy for all the hard work she and her dedicated planning committee have accomplished and all of the hard work they have before them.

Feldman, R. (2006). Reputation, Rankings, and Realities of Social Work Schools: Challenges for Future Research. *Journal of Social Work Education*, 42.3, 483-505.

Board of Visitors Report

The School of Social Work's Board of Visitors (BOV) has been very active. Ina Javellas, Chairman of the Board, assisted with planning the 2006 Annual Social Work Day held October 26, 2006. Numerous board members attended the November 3-4, 2006 Advanced Supervision and Practicum Instructor Workshop hosted by the School of Social Work and the Social Work Licensure Board - excellent presentations were made by Carlton E. Munson, Ph.D., LCSW. The Board Executive Committee, consisting of Ina Javellas, Chairman, Gail Lapidus, Vice-Chairman, and Robert Lee, Secretary/Treasurer, are participating in planning Annual Social Work Day to be held September 28, 2007 at the Oklahoma Memorial Union. These officers and numerous Board members are members of the School of Social Work 90th Anniversary Planning Committee event scheduled for October 26, 2007 at the Oklahoma Memorial Union. On another note, Robert Lee, Board of Visitors

Secretary/Treasurer, was the recipient of NASW 2007 Social Worker of the Year Award. We are all very proud of Robert and his contributions to social work practice within Oklahoma.

Over the course of this past year, Board meeting attendance and participation has been excellent. At these meetings the School's director, Donald Baker, has made several presentations to update BOV members on the progress in the School of Social Work. Several faculty have made visits to the BOV meetings including, most recently, Dr. David Moxley to talk about the School's continuing education efforts, and Professor Ellen Wisdom to update the membership on changes to the School's practicum program and the need to develop additional field education sites throughout the state. More faculty will be attending future meetings to keep the BOV abreast of changes and needs within the School. Below is a listing of the current BOV membership.

SCHOOL OF SOCIAL WORK BOARD OF VISITORS

The School of Social Work would like to extend a special thanks to all previous and current board members. Your dedication and involvement is greatly appreciated!

OFFICERS:

Ina Javellas
Robert Lee
Gail Lapidus
Sue Lunsford
Ammon Jenkins
Donald Baker

Honorary Board Member:

Ruth Knee

Emeritus Board Members:

Flanders Byford
Wayne Chess
Patti Flanagan
Martha Holmes
Oscar Jackson Jr.
Tim O'Connor
Jerry Toops

CURRENT ACTIVE BOARD MEMBERS:

Don Abbott*	Mike McCurtain*
Bernard Albaugh	Rietta Miller
Patti Albaugh*	Sara Musick*
Fran Alltizer*	Sharon Neuwald
Cheryl Bay*	Julia Norlin
Lynda Arnold	Virginia Olds
Judge Candace Blalock	Sherry Oliver Pierce*
Don Carter	C. Owen Pollard
Jeff Chace	Harvey Potts
Jacqueline Cook*	Evelyn Seaton*
Carissa Dobrinski*	Frank Seger*
Audry E. Haldaman	Sue Settles
Elma Holder	Julie Shepard*
Mike Fogarty	M. Jodie Standard
Terri Fritz	Tracey Strader
Charlotte Kendricks*	Dr. Gary Theilen
Linda Ketcher-Goodrich	Terri White
John Lopez	James Ybarra*

* Denotes New Board Members 2007

Practicum Program News

By Ellen Wisdom, MSW, ACSW, LCSW



Ellen Wisdom, MSW,
ACSW, LCSW
Practicum Coordinator

The Practicum Program at the OU School of Social Work continues to be both busy and productive. In August, 2006, Barbara Bramble, LCSW, ACSW joined the faculty as Clinical Assistant Professor and Practicum Coordinator in Tulsa. Professor Bramble is working closely with other faculty and with Martha Scales, Coordinator of the Child Welfare Professional Enhancement Program (CWPEP), to insure high quality practicum experiences for students on the Tulsa campus.

With increasing numbers of students on both Tulsa and Norman campuses, a full-time Practicum Coordinator in Tulsa was long overdue.

Between the Tulsa and Norman sites, we had nearly 170 students in practicum placements this past spring and another nearly 40 this summer. Professors Bramble and Wisdom are now engaged in planning for fall and spring field placements. Most of the BSW students in Norman have been assigned to field sites for the upcoming academic year, and orientations are underway for foundation year MSW students. For the first time, Tulsa students in their foundation year will have a chance to complete their first practicum during the fall and spring as well.

The Field Education Committee met several times this academic year and subcommittees worked diligently on policy review and Practicum Program evaluation. Policies of particular concern relate to employment-based practicum placements, modified practica, and practicum that are paid or stipended. We hope soon to have tools on line to better evaluate our Program and more specific and functional outcomes to facilitate the educational experience of students at all levels.

Since the last update, we have made significant progress in the development of the Practicum data base and we plan for online entry of data by students, practicum instructors, and practicum agencies that will assist with vitally needed updates. We have also made much progress with an update to the Practicum webpage and hope to have both a newly structured webpage and a totally revised practicum manual in place by early August, 2007.

Over the course of the past academic year, the Practicum Program and the CWPEP sponsored workshops and orientations for students and Practicum Instructors in both Norman and Tulsa. The Practicum program joined with CWPEP and the OUSSW Board of Visitors to offer two day-long skill-building workshops specifically for Practicum Instructors. In November, Carlton Munson, Ph.D., Professor of Social Work at the University of Maryland, presented in Norman, and in January, Anita Barbee, Ph.D., from the Kent School of Social Work at the University of Louisville presented in Tulsa. Both Dr. Munson and Dr. Barbee are known for their extensive research in the area of field instruction have trained widely on the topic of supervision.

Practicum faculty are looking forward to changes in our Program that will create more options for our graduate students including expansion of the ACP program to Tulsa and more choices in how students fulfill the time requirements of practicum. It is truly an exciting time to be a part of the Practicum Program at the OU School of Social Work.

If you have questions about the Practicum Program, please see the webpage at www.ou.edu/socialwork or contact Ellen Wisdom, Coordinator of Field Practicum Programs at ewisdom@ou.edu.



Diane Freeman, Staff Assistant III
& Special Events

Staff Spotlight: Diane Freeman

Diane has been a full-time staff assistant in the Social Work Department since December 1995. She has worked at the University of Oklahoma for 20 years. Prior to coming to Social Work she worked in the Personnel Department for 10 years. Diane schedules all events for the School of Social Work. She handles the payroll for the department, prepares all the contracts for the practicum program, and performs many other miscellaneous duties.

Diane is a real asset to the School of Social Work – most recently she obtained two basketballs signed by the Men's and Women's teams that were donated to the NASW-PACE auction. Through Diane's efforts the NASW-PACE is over \$500 richer – way to go Diane!

Diane is a native of Oklahoma. She and her husband Richard have been married for over 26 years. They love to travel and are planning a trip to Hawaii next year - she can't wait. The next time you see or talk to Diane make sure you say 'Aloha'.

Child Welfare Professional Enhancement Program

By Martha Scales, MSW, LSW, CWPEP Coordinator

Attention BSW and MSW students, the Child Welfare Professional Enhancement Program (CWPEP) is looking for a few good social work students who have an interest and desire to work in the challenging and exciting field of public Child Welfare in Oklahoma!!

CWPEP is a partnership between the University of Oklahoma, School of Social Work and the Oklahoma Department of Human Services (OKDHS). The mission of CWPEP is to recruit MSW and BSW graduates into the Oklahoma Department of Human Services Child Welfare. CWPEP is funded through Title IVE of the Social Security Act and is often simply referred to as IVE. The CWPEP uses these federal funds provided by OKDHS to assist social work students selected to participate in the program with their educational expenses. These selected students must demonstrate a commitment to working in public Child Welfare through the application process and orientation activities. CWPEP takes applications each spring semester from junior and senior BSW students and MSW students.

Child Welfare is without a doubt a very challenging field of social work that not everyone is suited for as this work is demanding, difficult and complex and requires an extraordinary commitment from social workers. However, those who are willing to experience the challenge of child welfare social work find it rewarding, exciting, fulfilling and an excellent foundation for their future social work career. The OKDHS offers employment opportunities across the state and there are opportunities for advancement. The beginning salary for a BSW graduate is approximately \$28,012.00 and for a MSW graduate the beginning salary is \$30,874.00 annually plus a monthly allowance to pay for core benefits (health, dental, life insurance and disability insurance).

National research on Child Welfare practice indicates that staff with social work degrees cope better with the complexities of CW work and make better permanent plans for children in care. Research on Oklahoma's CWPEP indicates that retention of CWPEP social work graduates in OKDHS CW is greater than the retention of non-CWPEP social work graduates.

Interested social work students can contact CWPEP for more information. Application packets are available in the spring and the deadline to submit applications is June 1st. Applicants must complete the application, including a short essay describing their interest in public child welfare, must have a criminal background check and driving records check, and must be citizens of the United States or legal permanent residents of the U.S. Students selected to participate in the CWPEP receive either a stipend that covers the cost of tuition, certain fees and required textbooks or payment of tuition, certain fees and required textbooks. Participants in the CWPEP sign a legally binding contract that requires an employment obligation with OKDHS in Child Welfare upon graduation; the employment obligation is one calendar year for each year of financial assistance. The goal of CWPEP is to recruit students who are seeking a career in public child welfare and who have a commitment to working in this field. Students who fail to meet the terms of the legal contract are required to repay all the funds expended in their behalf within one year. The OU CWPEP and the OU Collections Department actively pursue repayment of these federal funds.

CWPEP is a wonderful opportunity for social work students that demonstrate a commitment to working in the field of public child welfare; admission to the program is a competitive process and applicants are screened through an orientation to CW work, interviews with a panel of University and OKDHS staff, and references.

If you are pursuing a BSW or MSW degree and if you are interested in a career in public Child Welfare please contact CWPEP, 405-325-2907, for more information or see our website: www.ou.edu/socialwork/projects. The deadline for applying to CWPEP is June 1st.



If you are pursuing a BSW or an MSW degree and if you are interested in a career in public Child Welfare, please contact CWPEP, 405-325-2907, for more information or see our website: www.ou.edu/socialwork/projects

Anonymous Donor to Match Contributions to Man Keung Ho Scholarship

Alumni and friends of the late Dr. Man Keung Ho have an opportunity to double their tax credit by making a contribution to the M. K. Ho minority student scholarship fund. The scholarship fund campaign is one of the goals of the 90th Anniversary Committee. Dr. Curiel has identified an anonymous donor who will match contributions up to \$500 per contributor to the Man Keung Ho Scholarship fund. Director Dr. Don Baker told the Anniversary Committee the School has eight named Scholarship funds that lack sufficient funds to make awards. In most endowed funds only the interest generated can be used to make an award. Given increased tuition and book costs many students are in need of assistance.

Dr. Ho was a favorite teacher of many students in his twenty two years of teaching at OU before his untimely death at age 52 in 1992. Dr. Ho received his MSW and Ph.D. in counseling psychology from Florida State University. Before coming to OU, Dr. Ho was director of professional services at Tulsa, OK Boys' Home. In his short life as an academic Dr. Ho wrote seven books, two monographs, 13 book chapters and more than 90 articles. He was a frequent sought out speaker at national and international meetings. He was an active member of NASW. In 1981 he was named the Oklahoma Chapter's Social Worker of the Year. Dr. Ho was committed to increasing the number of minority students in the profession. Dr. Curiel thinks many of his former students will want to pay tribute to his memory and his wish to support minority students. Alumni and friends are encouraged to make a tax credit contribution to his scholarship endowment fund. Please see page 11 for more information on how you can contribute. Questions regarding the M. K. Ho Scholarship Fund can be directed to Dr. Herman Curiel, 405 325-1406.